

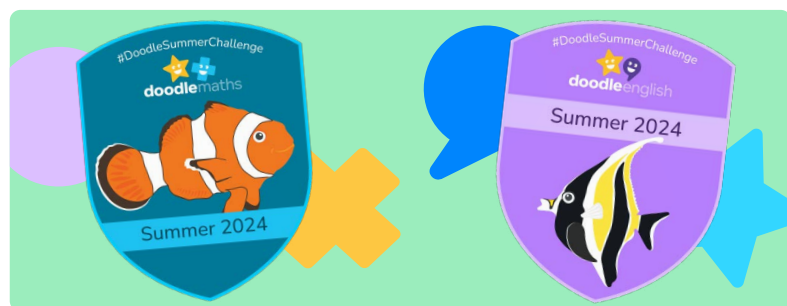


# The Doodle Spring Challenge

## 1st – 30th of April 2025

### Earn a pin badge and certificate!

Between the **1st - 30th of April**, Doodle are running two exciting woodland-themed Spring Challenges — the DoodleMaths Challenge and the DoodleEnglish Challenge!



Both Challenges are designed to encourage a few minutes of daily Doodling, keeping your child engaged in their learning and boosting their skills. Plus, they can **earn exclusive rewards** by taking part!

### How to take part

#### 1 Create and/or link your account

If you haven't already, create and/or link a parent account to your child's school account. To find out how to do this, see the reverse of this flyer or visit [help.doodlelearning.com](https://help.doodlelearning.com) and search '[how to link account](#)'.

#### 2 Register for the Challenge

From the **1st of April**, visit [parents.doodlelearning.com](https://parents.doodlelearning.com) and press **Register for the Challenge** next to your child's name for one or both Challenges.\* The last day to register for and begin the Challenge is the **24th of April**.

#### 3 Doodle 'little and often'

Once you've registered, encourage your child to **earn 450 stars** (or 350 if they were born after August 2017) and use **DoodleMaths and/or DoodleEnglish for 7 days\*** between the **1st - 30th of April**.

\*These 7 days don't need to be in a row. A day of use is defined as completing at least one exercise between 00:01 and 23:59.

#### 4 Receive a pin badge and certificate!

Once they've reached their target, we'll send a pin badge to their school. This will arrive after the Challenge comes to an end. You can also claim a certificate for them by visiting [parents.doodlelearning.com](https://parents.doodlelearning.com) and pressing **Claim reward** before the 23rd of May.



Tag us and use the hashtag **#DoodleSpringChallenge**

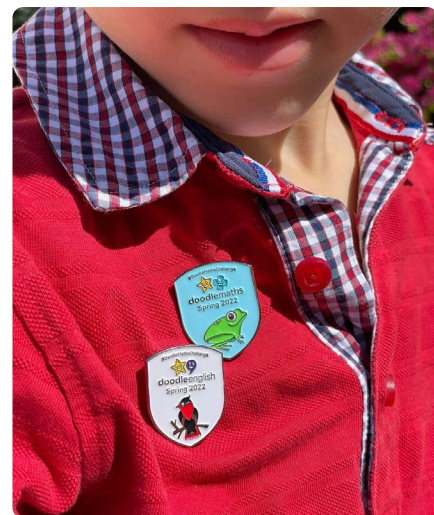
For more information, please visit [doodlelearning.com/challenge](https://doodlelearning.com/challenge).

Any questions? Please visit [help.doodlelearning.com](https://help.doodlelearning.com) and press on the green circle icon to chat to our team.



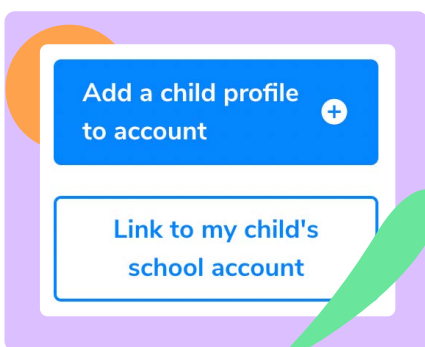
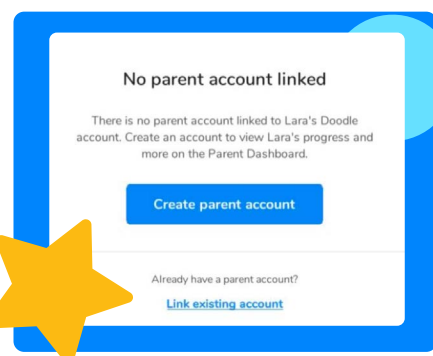
## How to create and/or link a parent account to your child's school account

Creating a parent account is really important (and really easy!). By doing this, you'll be able to enter the Spring Challenge and claim your child's personalised certificate by visiting [parents.doodlelearning.com](https://parents.doodlelearning.com), our online parent hub.



## How to create and/or link a parent account via the Doodle apps

- 1 Log in to any of the Doodle apps using the username and password provided by your child's school. **If you're not sure what these are, please contact your child's school rather than creating a new account for them.**
- 2 From the Learning Zone, click on the arrow icon in the top left-hand corner of the screen
- 3 Select **Settings** and press **Parent details**
- 4 If you're new to Doodle, choose **Create parent account**. If you already have a Doodle account, click on **Link existing account**.
- 5 Enter your details to link your email address to your child's account



## How to create and/or link a parent account via the Parent Dashboard

- 1 Visit [parents.doodlelearning.com](https://parents.doodlelearning.com)
- 2 If you're new to Doodle, click on **Create account** and follow the instructions. After you've done this, log in to [parents.doodlelearning.com](https://parents.doodlelearning.com). If you already have a parent account, log in to [parents.doodlelearning.com](https://parents.doodlelearning.com).
- 3 Once you've logged in, hover over **My account** and select **Child details**
- 4 Click on **Link to my child's school account** and enter the username and password provided by your child's school. **If you're not sure what these are, please contact your child's school rather than creating a new account for them.**



### Good luck, and happy Doodling!

\*The Challenge available will depend on your school's Doodle subscription. If you'd like to join both Challenges but your school does not subscribe to Doodle-Maths or DoodleEnglish, a home subscription can be taken out in the subject you're not subscribed to. To receive 2 FREE weeks of a home subscription, please visit [doodlelearning.com/challenge-offer](https://doodlelearning.com/challenge-offer).